

# AutomateWorks Release Notes

Version 6.0.878.715

4.10.2019 19:09:46



## Table of Contents

1	Version 6.0.878.715 released 4.10.2019 .....	3
2	Version 6.0.865.745 released 6.9.2019 .....	3
3	Version 6.0.853.743 built 13.8.2019 .....	4
4	Version 6.0.842.747 released 5.7.2019 .....	5

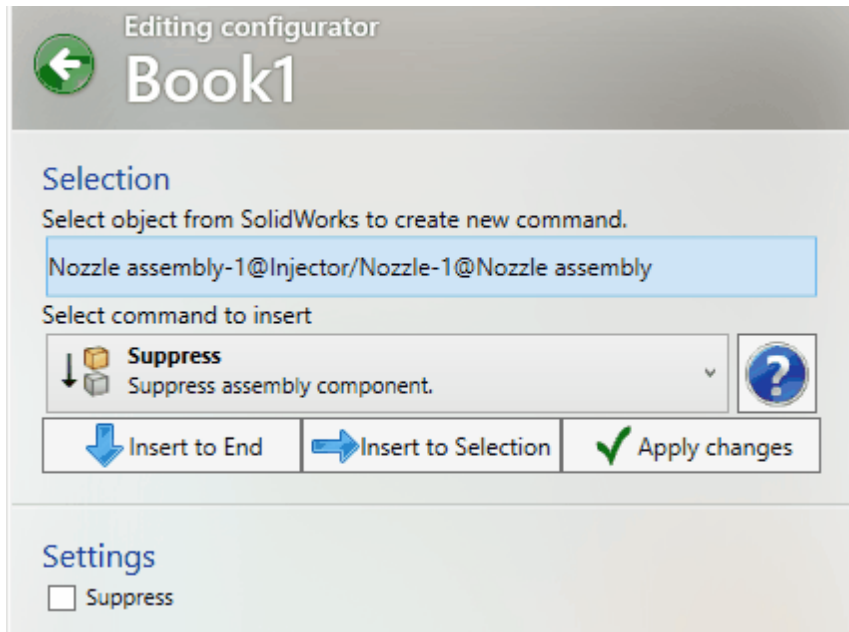
# 1 Release Notes

This document contains instructions and notes related to latest changes in AutomateWorks 6.

## 1.1 Version 6.0.878.715 released 4.10.2019

### Fixed minor bug in selections

In previous release, selecting a component in SolidWorks FeatureManager tree caused component name in selection commands to be wrong. This problem is now fixed.



### Fixed minor bug in Run command

Running SolidWorks macros using relative path did not work as intended. From now on, SolidWorks macros are correctly executed when using relative paths.

Clipboard					
Font					
Alignment					
Number					
B8					
1	Command	SolidWorks Object	Value	Status	Comment
2	run	Subdirectory\Macro1.swp			
3					
4					

## 1.2 Version 6.0.865.745 released 6.9.2019

### Included Release Notes in Help

From now on, release notes are included in both online and local version of AutomateWorks documentation.

### Removed license activation warning from Submit Job mode

In the previous versions of AutomateWorks Worker the license dialog may pop up if the worker was not licensed and user tried to submit a new job to AutomateWorks Server using Submit Job button. This is now fixed and submitting jobs to AutomateWorks Server is now possible with unlicensed Worker.

## Removed Excel workbook directory check in Submit Job mode

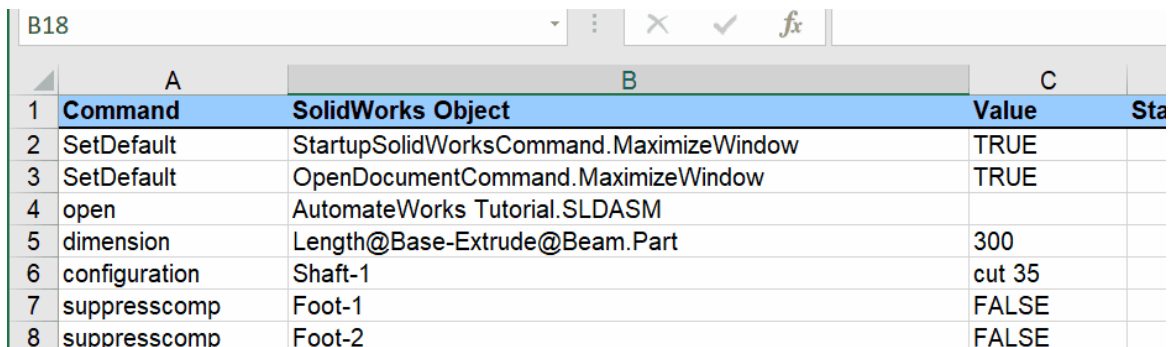
The logic in Submit Job mode in AutomateWorks Worker is now simplified. It is no more required to have worker root directory set when submitting a job to AutomateWorks Server. The matching configurator in AutomateWorks Server is selected by comparing file names of excel workbooks and the directory name is ignored. You can thus have a simplified version of your configurator when submitting jobs to server and they do not need to be located in any particular folder.

## Fixed bugs in Setup Configurator mode

When checking or unchecking a configurator in the Setup Configurator mode of AutomateWorks Worker, the configurator may lose all input fields as defined in the AutomateWorks Server website. This problem is now fixed and checking/unchecking configurator does not delete input fields.

## Implemented optional MaximizeWindow settings in StartupSolidWorks and OpenDocument commands

You can now maximize SolidWorks window automatically when SolidWorks is started and maximize document windows when a document is opened. To maximize windows, you can add SetDefault command to your configurator to set StartupSolidWorksCommand.MaximizeWindow and/or OpenDocumentCommand.MaximizeWindow settings to True. For example, in the AutomateWorks Tutorial, you could maximize windows as shown in the image below.



	A	B	C	Sta
1	Command	SolidWorks Object	Value	
2	SetDefault	StartupSolidWorksCommand.MaximizeWindow	TRUE	
3	SetDefault	OpenDocumentCommand.MaximizeWindow	TRUE	
4	open	AutomateWorks Tutorial.SLDASM		
5	dimension	Length@Base-Extrude@Beam.Part	300	
6	configuration	Shaft-1	cut 35	
7	suppresscomp	Foot-1	FALSE	
8	suppresscomp	Foot-2	FALSE	

### 1.3 Version 6.0.853.743 built 13.8.2019

## Fixed bug in home mode of AutomateWorks Worker

Layout of home mode in AutomateWorks Worker was broken and did not resize properly. The layout is now fixed.

## Fixed bug in "Run By Selection"

Run by Selection -button in Excel toolbar did not work as expected. The bug is now fixed and "Run by selection" works as intended.

## Added Finnish version of What's New manual

What's New -manual was translated to Finnish.

## 1.4 Version 6.0.842.747 released 5.7.2019

This version does not contain major changes in the program itself, so updating to this version is not necessary.

### **Added English version of What's New Manual**

What's new -manual was written and included in the build process so that it can be downloaded from the website.

### **Added release notes as .pdf file to download page**

This document containing version-specific release notes was added to the build process and download site.